

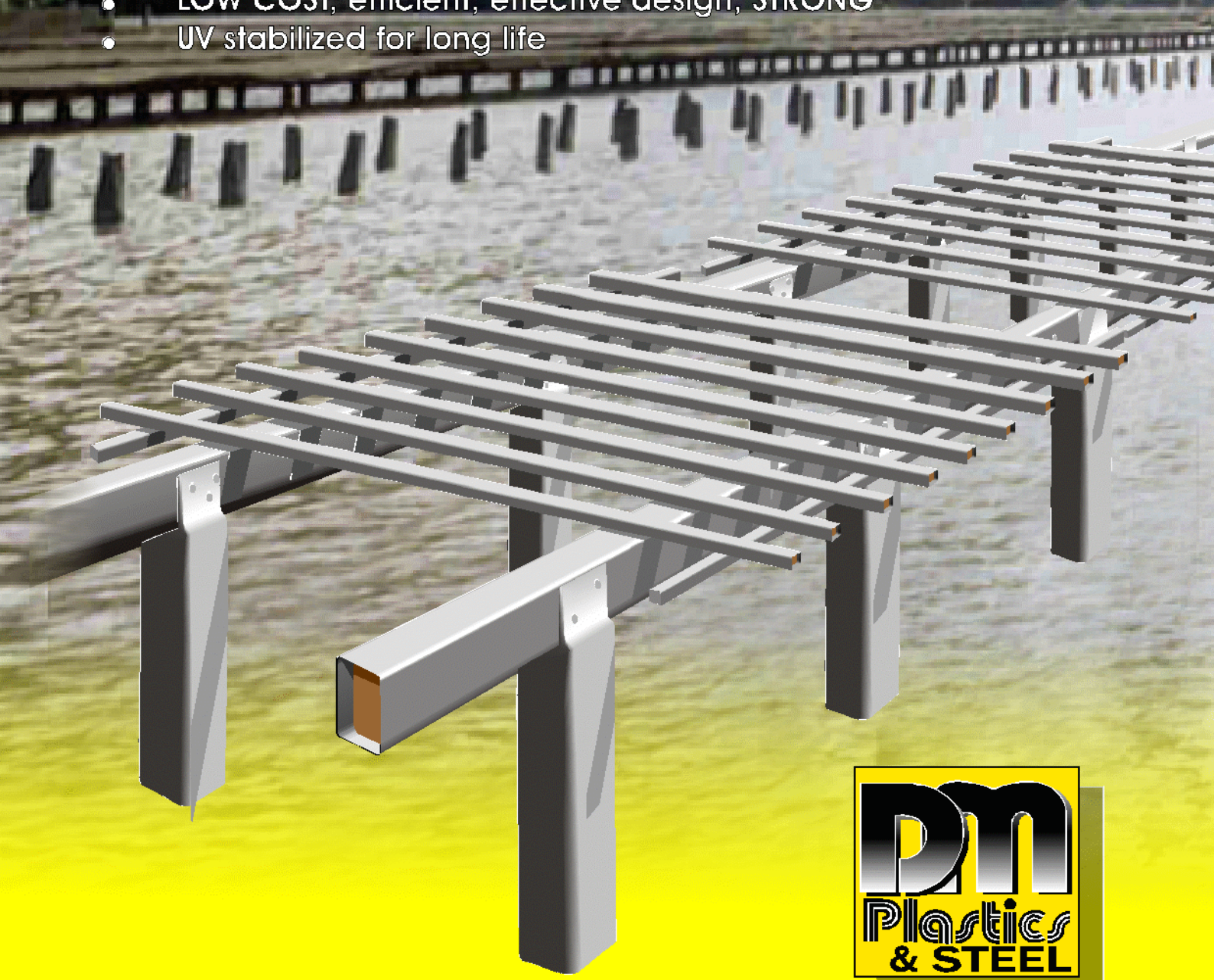
POLYMAX™ AQUACULTURE & OYSTER SYSTEM

FROM DM PLASTICS & STEEL

“Designed by oyster growers for oyster growers”

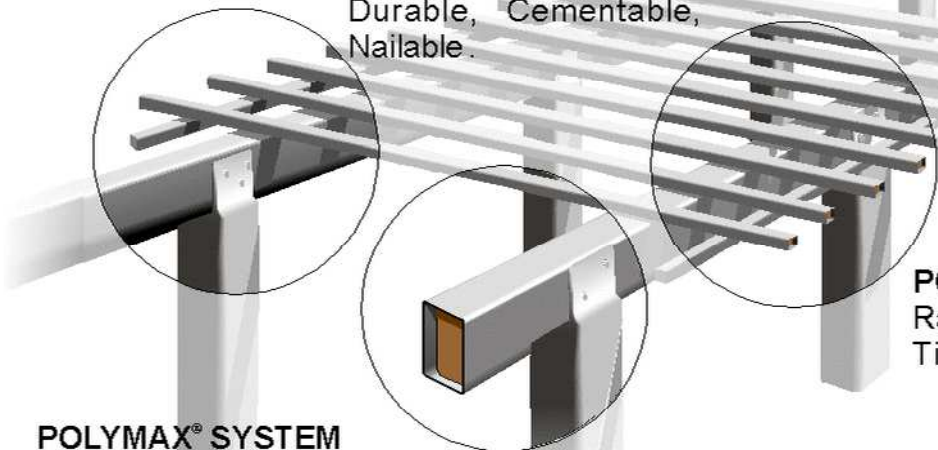
Long life products for inter-tidal oyster production systems

- Polyethylene over wood sleeving system for existing or new oyster rack posts, rails and growing sticks
- Easy to adapt and assemble to existing racks
- **LOW COST**, efficient, effective design, **STRONG**
- UV stabilized for long life



POLYMAX® OYSTER STICK SLEEVE

Sleeves existing oyster sticks for long life. Durable, Cementable, Nailable.



POLYMAX® RAIL SLEEVE

Rail sleeve easily fits (2" X 1") Timbers and slip sockets

POLYMAX® SYSTEM

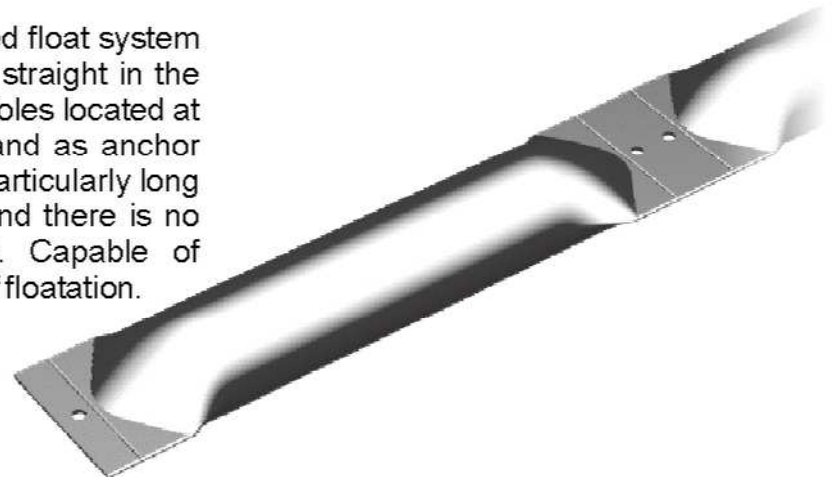
Protect or reinstate aquaculture timber structures from attack by borers. Puts years on the life of existing investments.

POLYMAX® Long Line Wire Sleeve

The heavy duty poly tube is an ideal way to protect wire lines from corrosion. The thick walls minimize wear and allow the oyster bag clips to grip and reduce slip.



The POLYMAX® Float Provides a rugged float system which can flex to wave motion, yet stay straight in the water with a minimum of anchor points. Holes located at hinge points can be used for hanging and as anchor points Polyethylene integral hinges are particularly long lasting. The seals created are reliable and there is no need to muck about with end caps. Capable of supporting up to 5kg of weight per meter of floatation.



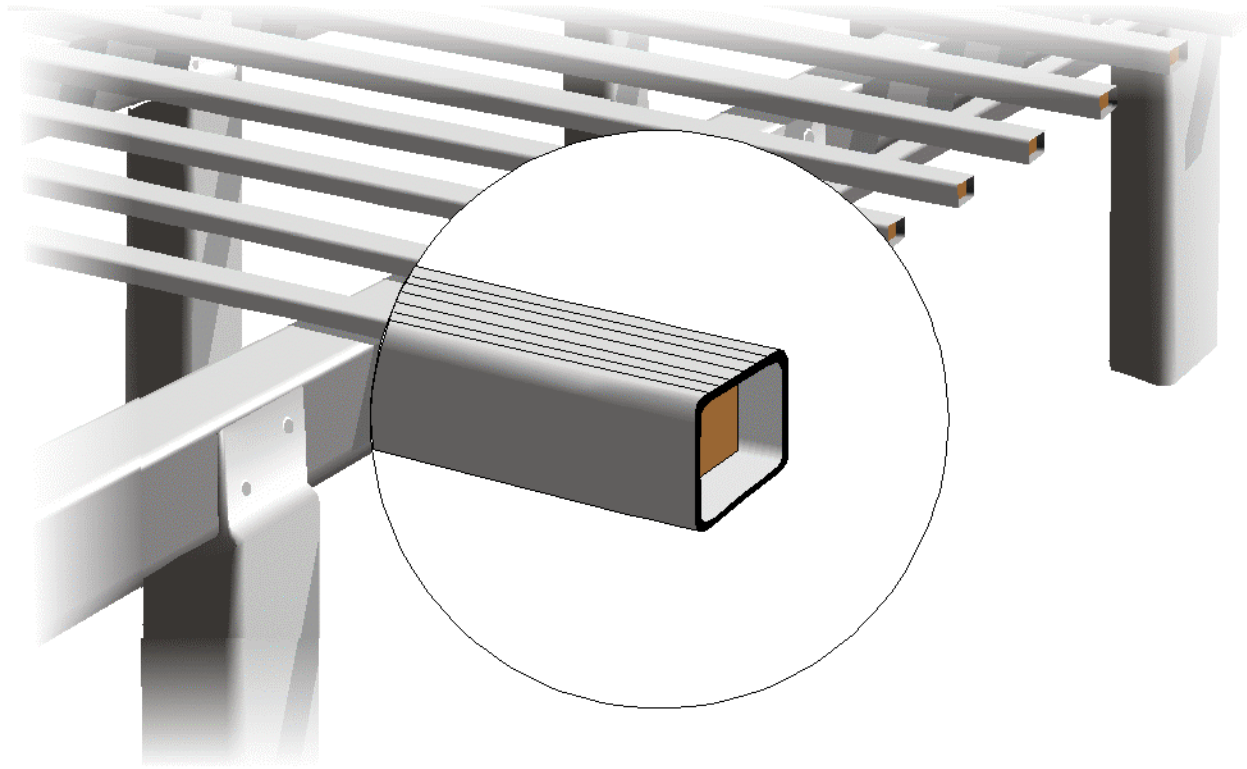
D & E Tucker Development Pty Ltd T/A DM Plastics & Steel
ABN: 73 007 823 430
PO Box 4 ENFIELD PLAZA South Australia 5085
14/555 Churchill Rd KILBURN South Australia 5084
Ph: (61 8) 8349 7654 Fax: (61 8) 8349 5431
Email: sales@dmplastics.com.au Website:
www.dmplastics.com.au



All information provided in support of the POLYMAX® Aquaculture System is given as recommendation only, based on anecdotal experience. The suitability for use should be determined by growers in according to their individual circumstances.

SLEEVING WOOD OYSTER STICKS

POLYMAX[®] OYSTER STICK SLEEVE



- Rumble or descale old oyster sticks, remove broken sticks.
- Slide wood sticks into POLYMAX OYSTER STICK SLEEVE
- Position wood equidistant from each end. Extra length is provided to allow for this. Lengths are normally 1.8- 1.825 meters.
- Ends may be stopped up with a cap as required and a securing staple or nail inserted.
- Nail sleeved wooden sticks onto frames as required.
- Standard POLYMAX sleeves are plain, or grooved on two sides to aid oyster spat adhesion. Alternatively the whole stick maybe dipped into cement slurries to aid oyster spat adhesion. Allow for oyster removal by beating. Cement slurry application will seal up the sleeve ends. POLYMAX sleeves are designed for long life and are resistant to the elements and physical impact.
- If the wood is broken and cannot be pushed from the sleeve, slit the sleeve from end to end, then force out the damaged stick. The slit sleeve can then be re-used.
- Non Standard POLYMAX OYSTER STICKS sleeves are available one, three or four sides scratched. Minimum orders apply



D & E Tucker Development Pty Ltd T/A DM Plastics & Steel
ABN: 73 007 823 430
PO Box 4 ENFIELD PLAZA South Australia 5085
14/555 Churchill Rd KILBURN South Australia 5084
Ph: (08) 8349 7654 Fax: (08) 8349 5431
Email: sales@dmplastics.com.au Website: www.dmplastics.com.au



All information provided in support of the POLYMAX[®] Oyster System is given as recommendation only, based on anecdotal experience. The suitability for use should be determined by growers in according to their individual circumstances.